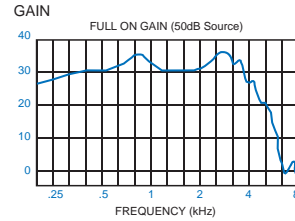
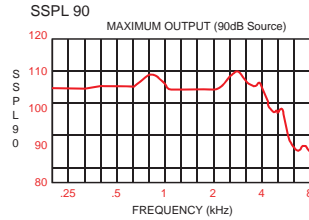




INDEPENDENCE

Use and Care of
Your Hearing Instruments

OF₁-163



OF ₁ -163 ANSI SPECIFICATIONS	
MAX SSPL 90	110 dB +/- 4
HFA SSPL 90	105dB +/- 4
MAX FOG	35dB +/- 5
HFA FOG	30dB +/- 5
THD 500Hz	≤2% MAX
800 Hz	≤2% MAX
1.6kHz	≤2% MAX
FREQ RANGE F1	200Hz
F2	6500Hz
REF TEST GAIN	30dB +/- 3
EIN	≤25dB MAX
BAT DRAIN	1.25mA MAX

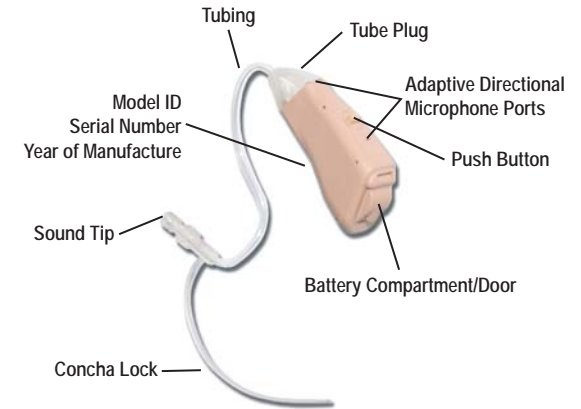


Since 1979 **America Hears, Inc.**

806 Beaver Street Bristol, PA 19007
800-492-4515

Revision 07/09

PARTS OF YOUR OF₁-163



Inside Battery Door
Blue = Left Side

Inside Battery Door
Red = Right Side



ACCESSORIES



Storing/Drying jar



Soft pouch



Cleaning tool

Your hearing instruments are shipped with a variety of accessories, a sampling pictured above, including the following:

- Hard case
- Soft pouch
- 1 box of batteries per instrument
- Storing/Drying jar
- Program selection wand
- Cleaning tools

If you have any questions about the use of these accessories please contact your hearing care professional.

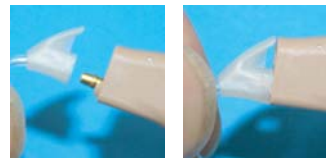
TUBING REPLACEMENT



Note: It is important **NOT** to pull the tubing itself, as it can become stretched and distorted requiring replacement.



REMOVAL: Grasp the connector firmly. Do not pull the tubing itself, as it can become stretched and distorted. Twist the connector 90 degrees (as shown.) Pull straight out.



ATTACHMENT: To attach, align the acoustic tube plug with the opening and push firmly until it snaps into place. Note: You will feel a firm de-dent as it locks into place.

BATTERY INSERTION



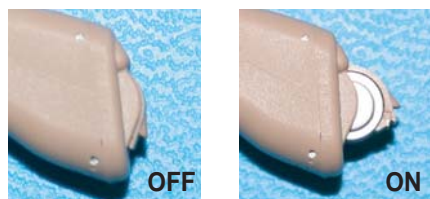
Your hearing aids are designed to use size 10 batteries. A zinc-air type battery is recommended, but any type or brand may be used.

To insert, remove the adhesive label and wait thirty seconds for air to activate the battery. Any moisture on the battery surface should be wiped off prior to insertion. **With the positive side up**, insert the battery into the battery door. It may take several minutes for the battery to work to its full effect.

To remove the battery, open the battery door and lift the battery out of the battery door.

Low battery indicator: When your battery voltage is low and in need of replacement you will hear the low battery indicator. You will hear five beeps indicating that it is time to change your battery. The warning beeps will be repeated.

ON/OFF FUNCTION



Your hearing instrument is turned on and off by opening and closing the battery door. Opening the battery door every time you remove your instruments will prolong the life of your hearing aid batteries.

INSERTING HEARING AIDS



Inserting your hearing instruments for the first time can be challenging. Until your hearing aid is fully inserted there can be feedback (whistle). We suggest that you practice without the battery until you have perfected this procedure. With practice, inserting your hearing aids will become as easy as putting on your glasses.



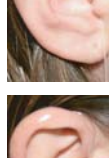
To insert your hearing instrument:

Grasp the hearing aid between your thumb and forefinger.



Place it over your ear as shown.

Gently push the ear piece into the ear canal.



Tuck the concha lock into the bowl of your ear.

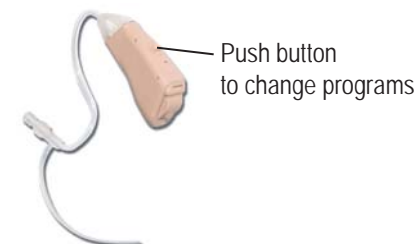
When positioned correctly your hearing aid is almost completely invisible.



Note: It is important to remove the instrument by grasping the instrument itself. Please do NOT remove the instrument by pulling the tubing, as it can become stretched and distorted and may void the warranty.

PROGRAM SELECTION

As you change programs, you will hear a series of beeps, which will represent the change, as listed below.



Program 1 (General Use): One Beep

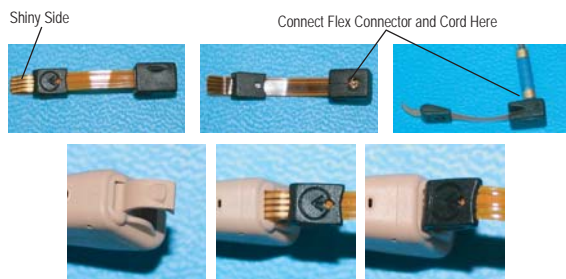
Program 2 (Noisier Situations): Two Beeps

Program 3 (Windy Situations): Three Beeps

Program 4 (Not Active) : Four Beeps

When you turn your hearing aid on it is automatically set to program one.

PROGRAMMING CORD CONNECTION



Your hearing aids use a flex connector to connect the programming cord to the hearing instruments.

- Align red dots on the flex connector and programming cable.
- Connect programming cable to the flex connector.
- Open the battery door slightly to create a space on the hinged side of the battery door.
- Insert the flex connector into the space created. The gold (shiny) side of the flex connector must be facing away from the battery compartment. Do not force this connection.
- Close the battery door.

Refer to the QuickStart Guide and/or the Virtual Office Tutor for programming instructions.

CLEANING TOOL

Daily wipe your instruments, tubing, sound port, and tips/molds clean with a soft, dry cloth, carefully removing any traces of wax and debris. A brush is provided to further assist you in cleaning.

After being disconnected from your hearing instrument, your tips/molds can be washed in lukewarm water with a mild detergent. Reconnect after drying thoroughly.



Tip replacement

Custom mold replacement

To clean your thin acoustic tube detach tube from the instrument and then insert the cleaning tool into the plug end of the tube. Push all the way through the tube, removing wax and debris out of the sound tip end.



STORING/DRYING JAR



We recommend that you store your hearing instruments in the drying kit when the aids are not in use.

Open the battery door of your hearing instruments, place them on top of the circular foam piece,

and firmly secure lid on the jar. Removing batteries before storing will extend battery life.

There is a small amount of blue beads in the jar that are designed to fade and blend in with the other beads when it is time to reactivate. After reactivation these beads will return to their original blue color. Keeping the lid firmly in place at all times will extend the time between reactivation.

Carefully follow the directions on the jar to reactivate the beads. Allow the beads to cool to room temperature before placing them back into the jar.

Never put your hearing instruments, batteries, glass jar, lid or foam in the oven or microwave. Do not place over an open flame.